

# CENTRIFUGAL FANS

HIGH EFFICIENCY FOR DRYING OR AERATION



## **MORE AIRFLOW FOR LESS MONEY**

SIoux STEEL COMPANY PUTS GREAT EFFORT INTO DESIGNING AND MANUFACTURING THE BEST FAN FOR YOUR NEEDS.

THIS IS WHY SIoux'S GOLD QUALITY FANS ARE #1 IN THE INDUSTRY. THE FAN IS THE KEY TO A SUCCESSFUL DRYING AND AERATION SYSTEM. THAT'S WHY OUR FANS COME WITH RELIABILITY AND DEPENDABILITY BUILT RIGHT IN.

**CALL NOW FOR A DEALER  
NEAREST YOU!  
1 (800) 557-4689**



## **DESIGNED AND TESTED FOR MAXIMUM PERFORMANCE**

HIGH EFFICIENCY FOR DRYING OR AERATION

Sioux Steel's Gold Quality Centrifugal Fans are bench-tested prior to shipping in order to ensure that our customers are getting a top quality product that works properly from day one.

Our Highly Trained Engineers test motor amperage and temperature under long-term, maximum-load conditions to ensure that the motors will stand up under tough operating conditions.

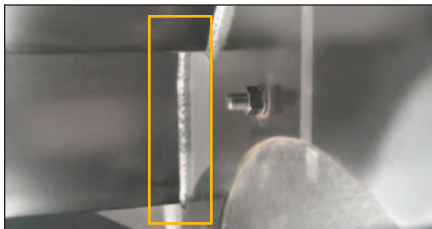
Adjustable legs on fans allow easy leveling and support while giving more flexibility for adjusting to inconsistencies in a concrete pad.

Sioux Gold Quality Centrifugal Fans are quiet compared to other leading manufactured fans.

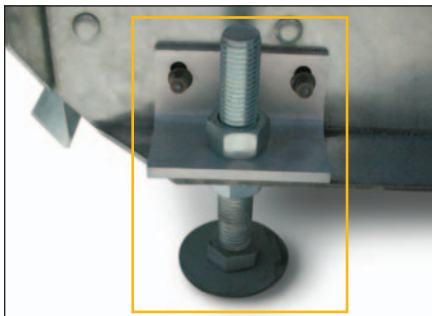
**AG DRIVEN, GOLD QUALITY**  
SOLUTIONS FOR TODAY AND TOMORROW

# SIoux STEEL COMPANY

196 1/2 E. 6th Street | P.O. Box 1265  
 Sioux Falls, SD 57101-1265  
 Phone: 605-336-1750 or 800-557-4689  
 Fax: 605-357-8597 or 800-733-4134  
 www.siouxsteel.com



- ❖ Sioux Gold Quality **BLADES ARE SOLID WELDED**, NOT STITCHED for longer life of the fan.



- ❖ **ADJUSTABLE LEGS** on fans allow easy leveling and support while giving more flexibility for adjusting to inconsistencies in a concrete pad.
- ❖ Special airfoil blades move more air due to the backward curved, non-overloading design.
- ❖ Fan wheels are statically and dynamically balanced for smooth, trouble-free operation.
- ❖ Sioux Gold Quality Centrifugal Fans are quiet compared to other leading manufactured fans.
- ❖ Fans and heaters carry a 2 year warranty.

**ASK ABOUT SIoux STEEL COMMERCIAL & FARM BINS.**

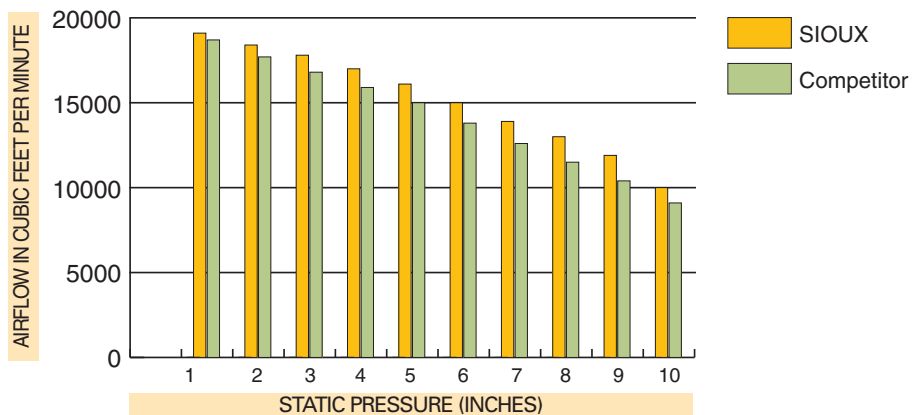
## WE ADDED LONGEVITY TO OUR FAN INCLUDING A 2 YEAR LIMITED WARRANTY

Sioux Gold Quality centrifugal fans are manufactured with heavy duty 11 gauge side rails. This means significantly less vibration for a more stable platform which adds longevity to your fan. Sioux fans are built to last.

- ❖ NO MATTER THE HORSEPOWER, SIoux GOLD QUALITY CENTRIFUGAL FANS STAND OUT AS THE BEST PERFORMING FAN IN THE BUSINESS!

## HIGH EFFICIENCY=MAXIMUM PERFORMANCE

Even in this 20HP comparison, Sioux Gold Quality beats the leading competition. Our fans perform better under high pressure conditions.



	1	2	3	4	5	6	7	8	9	10
<b>SIoux</b>	19100	18400	17800	17000	16100	15000	13900	13000	11900	10000
Competitor	18700	17700	16800	15900	15000	13800	12600	11500	10400	9100

## 1750 RPM CENTRIFUGAL FAN DIMENSIONS (INCHES)

HP	HEATER LENGTH	FAN LENGTH	FAN HEIGHT	FAN OPENING HEIGHT	FAN OPENING WIDTH	FAN TOTAL WIDTH	FAN WHEEL DIAMETER	FLANGE WIDTH	FLANGE HEIGHT
3	-	31 3/4	36 5/8	19 3/4	12	29 1/2	26	16 1/8	24 3/4
5	-	42 1/4	50 3/4	27 1/2	15 5/8	32 1/2	22 13/16	20	30 3/8
7 1/2	24	42 1/4	50 3/4	27 1/2	17 3/4	40	25 1/16	22 1/8	32 5/8
10	24	42 1/4	50 3/4	27 1/2	17 3/4	40	27 1/2	22 1/8	32 5/8
15	24	42 1/4	50 3/4	27 1/2	19 1/4	42 1/4	27 1/2	23 1/2	32 5/8
20	24	48 1/4	59 1/4	33	20 1/4	44	30 5/8	24 1/2	37 3/4

**AG DRIVEN, GOLD QUALITY**  
 SOLUTIONS FOR TODAY AND TOMORROW